

# VT01 dvodna

---

**Donadić, Dorian**

**Supplement / Prilog**

*Publication year / Godina izdavanja:* **2022**

*Permanent link / Trajna poveznica:* <https://urn.nsk.hr/urn:nbn:hr:190:116659>

*Rights / Prava:* [Attribution 4.0 International](#)/[Imenovanje 4.0 međunarodna](#)

*Download date / Datum preuzimanja:* **2024-11-30**



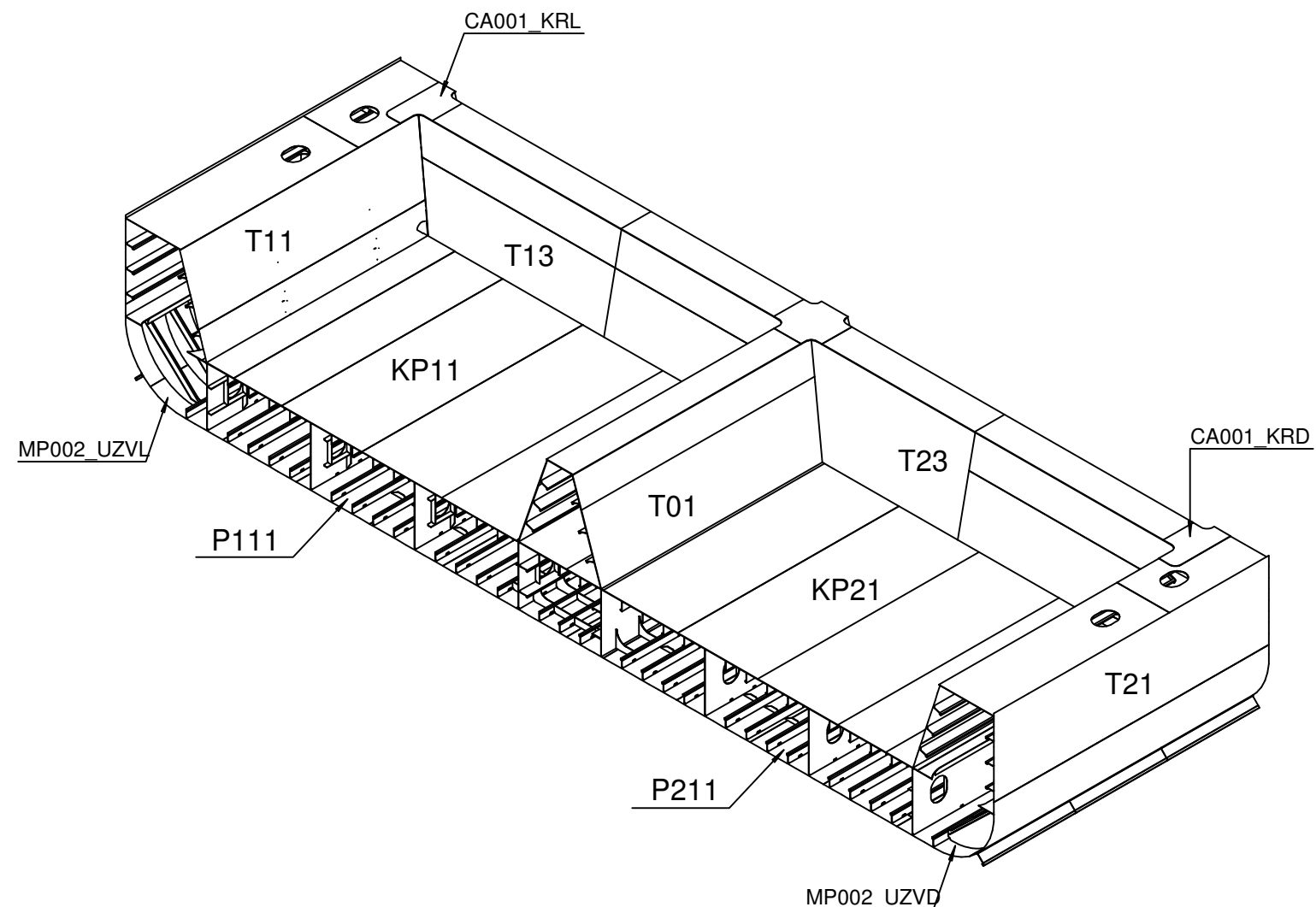
*Repository / Repozitorij:*

[Repository of the University of Rijeka, Faculty of Engineering](#)



# VT01

| OZNAKA            | RAD.MARKA    | NAZIV      | BROJ | DIMENZIJE             | KV.MAT. | MASA [kg] |
|-------------------|--------------|------------|------|-----------------------|---------|-----------|
| CT3410-PVOB/S*    | 514          | profile    | 8    | FB10: 150x15.0 L=0.00 | AH36    | 64.9      |
| CT3410-PVOB/S81*  | 514          | profile    | 2    | FB10: 150x15.0 L=0.00 | AH36    | 16.7      |
| CT3410-PVOB/S67*  | 510          | profile    | 2    | FB10: 80x15.0 L=0.00  | AH36    | 194.6     |
| CT3410-PVOB/S65*  | 512          | profile    | 2    | HP20: 370x15.0 L=0.00 | AH36    | 1250.5    |
| CT3410-X*         | 286          | lim        | 16   | 15.00                 | AH36    | 326.6     |
| CT3410-X*         | 285          | lim        | 16   | 15.00                 | AH36    | 570.9     |
| CT3410-X*         | 284          | lim        | 10   | 15.00                 | AH36    | 246.2     |
| CT3410-X110D-1*   | 172          | lim        | 2    | 14.00                 | A       | 22.7      |
| CT3410-X110C-*    | 820          | bracket pl | 25   | 14.0                  | AH36    | 0.0       |
| CT3410-X110*      | 804          | bracket pl | 7    | 12.0                  | A       | 28.4      |
| CT3410-*          | 814          | bracket pl | 18   | 12.0                  | A       | 33.1      |
| CT3410-X10*       | 287          | lim        | 6    | 15.00                 | AH36    | 146.1     |
| CT3410-*          | 805          | bracket pl | 83   | 12.0                  | A       | 337.1     |
| CT3410-*          | 809          | bracket pl | 57   | 12.0                  | A       | 215.4     |
| CT3410-X106G-1*   | 96           | lim        | 2    | 13.00                 | AH36    | 20.9      |
| CT3410-*          | 810          | bracket pl | 24   | 12.0                  | A       | 84.9      |
| CT3410-*          | 808          | bracket pl | 8    | 15.5                  | AH36    | 0.0       |
| CT3410-*          | 806          | bracket pl | 16   | 13.0                  | AH36    | 0.0       |
| CT3410-X102B-1*   | 63           | lim        | 2    | 13.00                 | AH36    | 20.9      |
| CT3410-RB-2*      | 111          | lim        | 2    | 14.00                 | A       | 22.2      |
| CT3410-110MA*     | 179          | lim        | 3    | 14.00                 | AH36    | 24.2      |
| CT3410-Z5300A-3SP | 151          | lim        | 1    | 19.00                 | AH36Z25 | 400.0     |
| KP11              |              | sklop      | 1    |                       |         | 64079.7   |
| KP21              |              | sklop      | 1    |                       |         | 47465.2   |
| P111              |              | sklop      | 1    |                       |         | 21675.4   |
| P211              |              | sklop      | 1    |                       |         | 16599.9   |
| T01               |              | sklop      | 1    |                       |         | 16331.5   |
| T11               |              | sklop      | 1    |                       |         | 14771.0   |
| T21               |              | sklop      | 1    |                       |         | 14771.0   |
| T13               |              | sklop      | 1    |                       |         | 19935.8   |
| T23               |              | sklop      | 1    |                       |         | 19935.8   |
| CA001_KRD         |              | sklop      | 1    |                       |         | 292.2     |
| CA001_KRL         |              | sklop      | 1    |                       |         | 292.2     |
| MP002_UZVD        |              | sklop      | 1    |                       |         | 5757.8    |
| MP002_UZVL        |              | sklop      | 1    |                       |         | 5757.8    |
|                   | 10A12        | pločica    | 9    |                       |         |           |
|                   | 10B12        | pločica    | 9    |                       |         |           |
|                   | 10A13        | pločica    | 8    |                       |         |           |
|                   | 10B13        | pločica    | 8    |                       |         |           |
|                   | 10A13 AH36   | pločica    | 8    |                       | AH36    |           |
|                   | 10B13 AH36   | pločica    | 8    |                       | AH36    |           |
|                   | 10A15        | pločica    | 24   |                       |         |           |
|                   | 10B15        | pločica    | 24   |                       |         |           |
|                   | 10A15.5 AH36 | pločica    | 8    |                       | AH36    |           |
|                   | 10B15.5 AH36 | pločica    | 8    |                       | AH36    |           |



|                         |             |          |                 |            |             |
|-------------------------|-------------|----------|-----------------|------------|-------------|
| GRADNJA:                | NACRT BROJ: | LIST:    | 1               | TEZINA:    | 251691.654  |
| 722, 723                | 4-341-010   | LISTOVA: | 2               | TEZISTE X: | FR106-372.0 |
| SKLOP: <b>3410-VT01</b> |             |          | TEZISTE Y: -2   |            |             |
| DATUM:                  |             |          | TEZISTE Z: 2075 |            |             |