

# Nacrt

---

Šuper, Maria

## Supplement / Prilog

Publication year / Godina izdavanja: **2024**

Permanent link / Trajna poveznica: <https://urn.nsk.hr/urn:nbn:hr:190:237036>

Rights / Prava: [Attribution 4.0 International](#)/[Imenovanje 4.0 međunarodna](#)

Download date / Datum preuzimanja: **2025-01-14**



Repository / Repozitorij:

[Repository of the University of Rijeka, Faculty of Engineering](#)

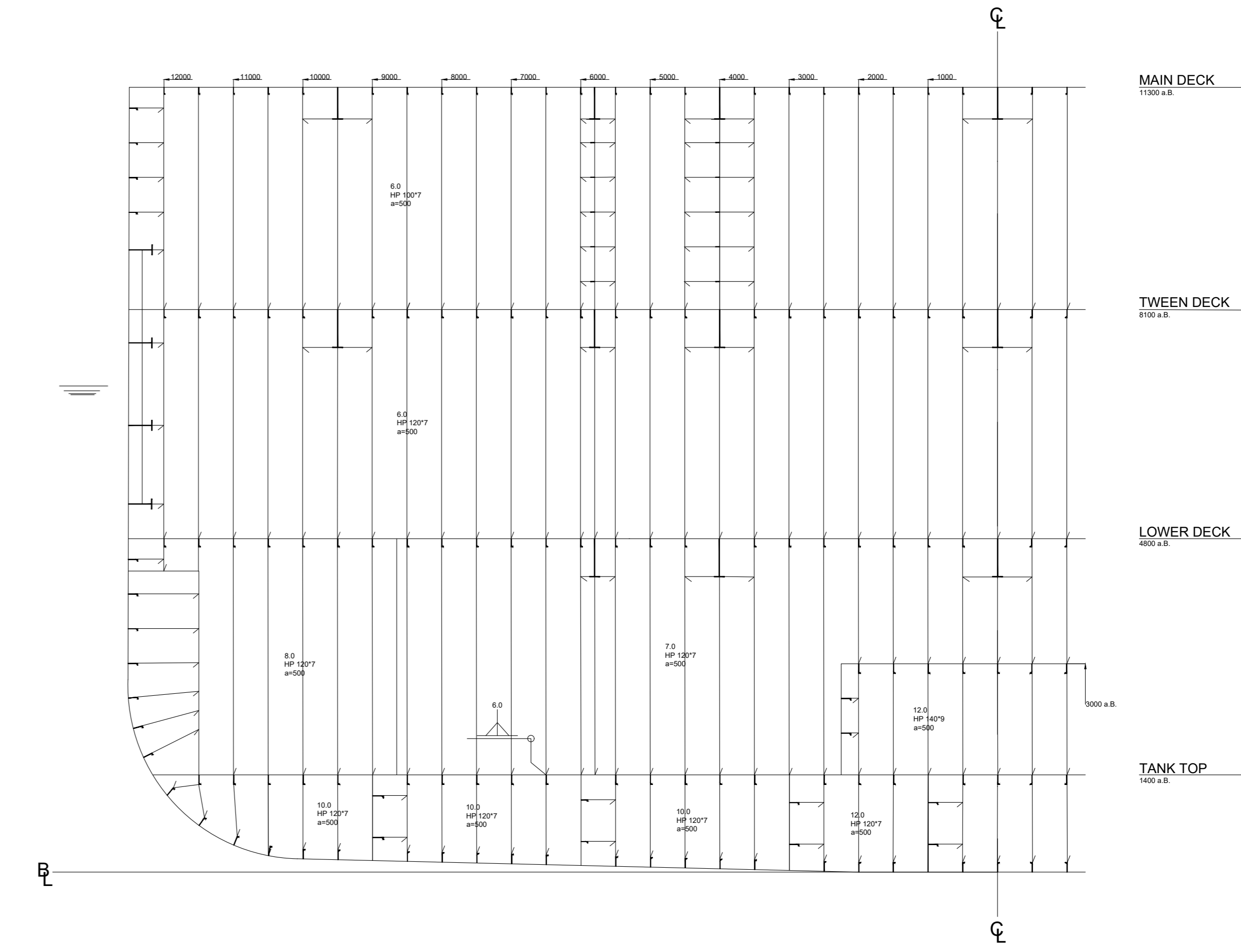
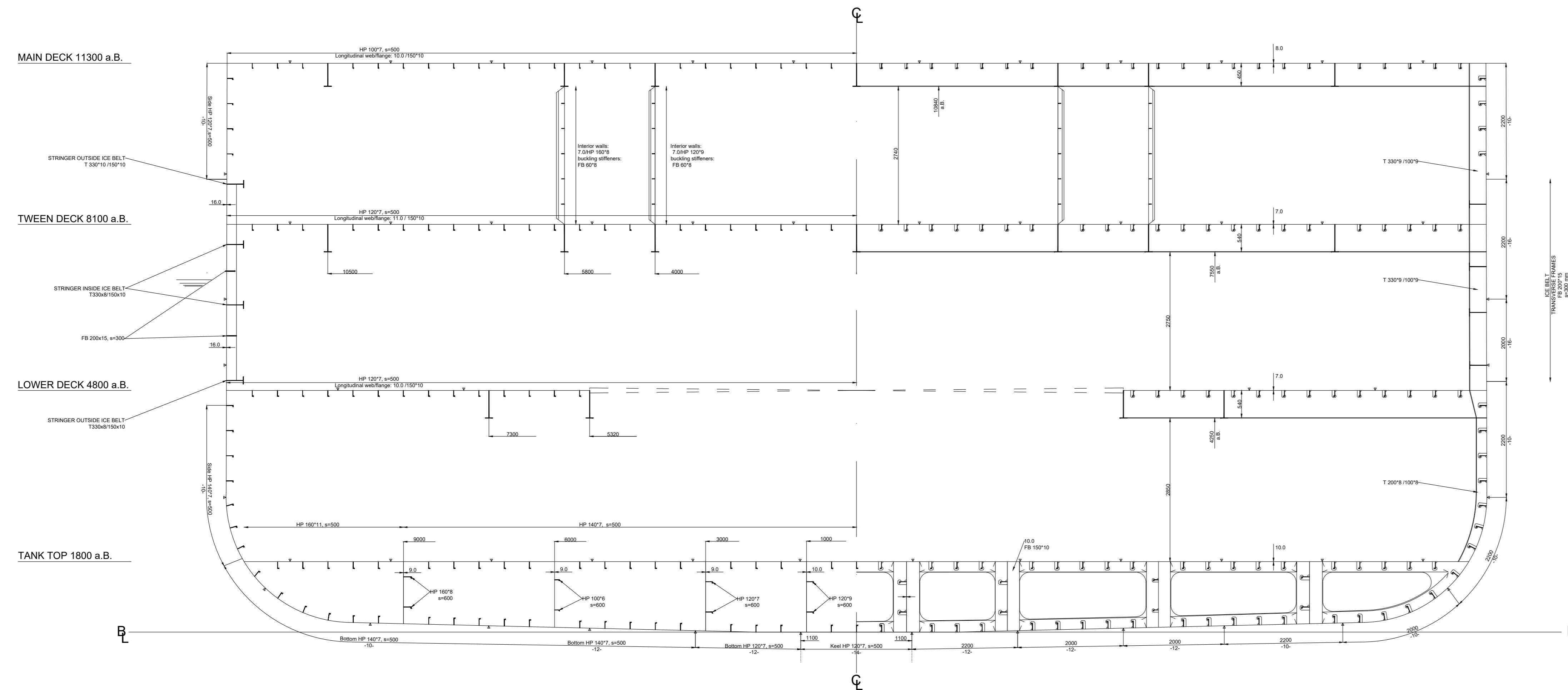


**MAIN SECTION**  
FRAME SPACING a=600

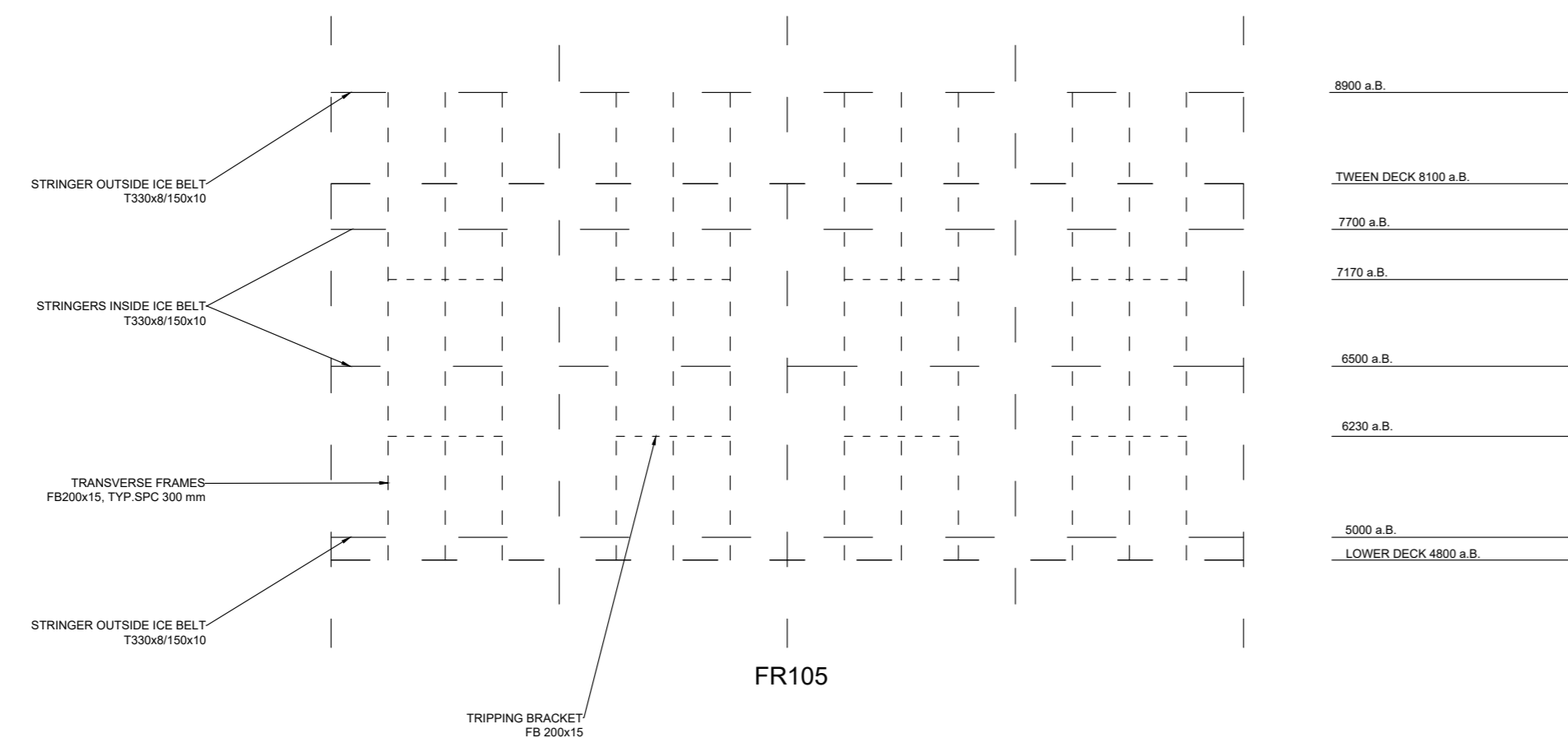
**TYPICAL - FRAME #100**

**WEB FRAME #99**  
each 1800 mm (3rd frame)

**Typ. WT-Bulkhead (Frame 112 shown)**

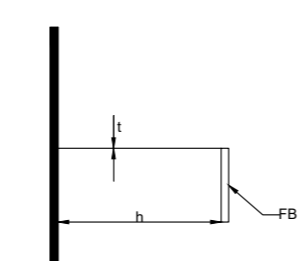


**DETAIL OF ICE BELT**



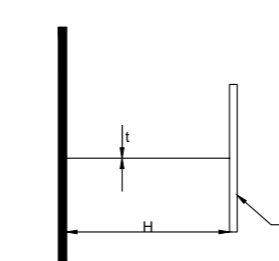
**Definition of Stringer-dimensions**

Stringer h"x" FB x"y" means:



**Definition of Webframe-dimensions**

T H"x" X"Y" means:



**MAIN DIMENSIONS**

LOA	127.000 m
LPP	117.00 m
LWL	120.00 m
RULE LENGTH	115.00 m
BREADTH MOULDED	25.00 m
DEPTH TO MAINDECK	11.30 m
DESIGN DRAUGHT	7.00 m
SCANTLING DRAUGHT	7.20 m

DISPLACEMENT (AT DESIGN DRAUGHT)	1488 t
DISPLACEMENT (AT SCANTLING DRAUGHT)	15425 t

SCANTLING SPEED	15 knots
CB	0.65

**CLASS NOTATION**

ICE-1C/E1

Datum	30.07.2024.	Ime i prezime	Maria Šuper	Potpis	Format	A0	Mjerilo:	1:50
Nacrtao:	30.07.2024.	Provjerio:	30.07.2024.	Maria Šuper	List / listova:	1 / 1		
Odobrio:	10.09.2024.	Albert Zamarin	Materijal:	VL-36	Šk. god.:	2023./2024.		
Tehnički fakultet Rijeka	Naziv:	Main Section	Broj crteža:	1				