

# Kompletirani panel

---

**Donadić, Dorian**

**Supplement / Prilog**

*Publication year / Godina izdavanja:* **2022**

*Permanent link / Trajna poveznica:* <https://urn.nsk.hr/urn:nbn:hr:190:580718>

*Rights / Prava:* [Attribution 4.0 International](#)/[Imenovanje 4.0 međunarodna](#)

*Download date / Datum preuzimanja:* **2025-01-28**



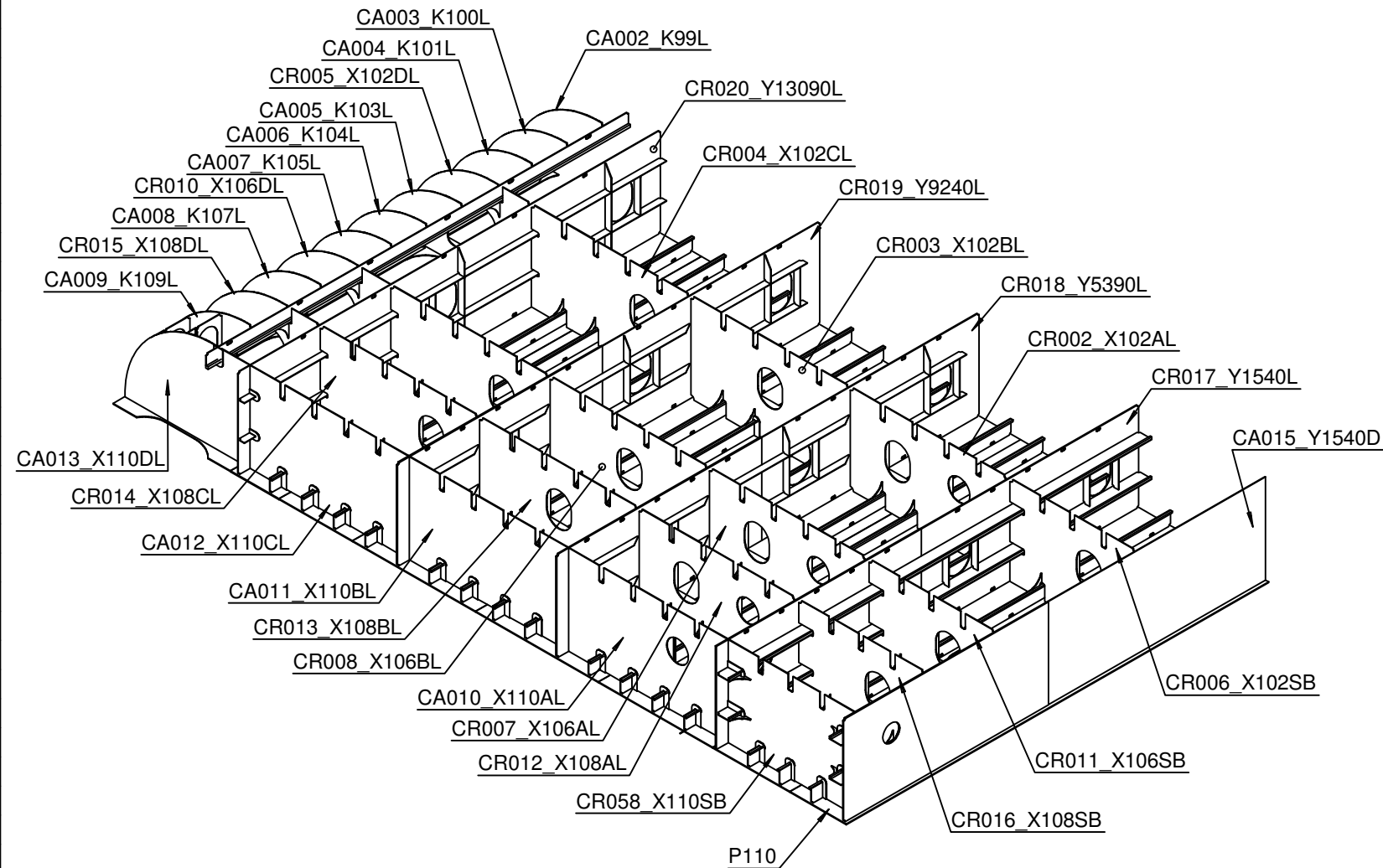
*Repository / Repozitorij:*

[Repository of the University of Rijeka, Faculty of Engineering](#)



# KP11

OZNAKA	RAD.MARKA	NAZIV	BROJ	DIMENZIJE	KV.MAT.	MASA [kg]
CT3410-110MAY*	180	lim	4	14.00	AH36	34.5
CT3410-110MA*	178	lim	3	14.00	AH36	25.9
CT3410-PVOB/S25P	502	profile	1	HP20: 300x13.0 L=0.00	AH36	428.1
CT3410-Y15400A-1P	141	lim	1	12.00	A	18.9
CT3410-Y14630A-1P	146	lim	1	12.00	A	16.0
CT3410-X110FSB-*	817	bracket pl	2	12.0	A	2.8
CT3410-X110FSB-1*	817	bracket pl	2	12.0	A	3.1
CT3410-X110FSB-1*	816	bracket pl	2	12.0	A	4.5
CT3410-X110FSB-1*	816	bracket pl	2	12.0	A	3.9
CT3410-*	818	bracket pl	13	12.0	A	23.9
CT3410-X110*	814	bracket pl	3	12.0	A	5.5
CT3410-X110E-*	800	bracket pl	3	12.0	A	24.9
CT3410-X110C-41BP	820	bracket pl	1	14.0	AH36	0.0
CT3410-X110C-*	819	bracket pl	12	14.0	AH36	0.0
CT3410-X10*	809	bracket pl	3	12.0	A	11.3
CT3410-X10*	805	bracket pl	3	12.0	A	12.2
CT3410-*	803	bracket pl	45	12.0	A	86.6
CT3410-*	811	bracket pl	41	12.0	A	73.7
CT3410-*	807	bracket pl	4	13.0	AH36	0.0
CT3410-*	812	bracket pl	4	12.0	A	6.2
CT3410-MA110_*	182	lim	2	14.00	A	7.6
P110		sklop	1			25467.1
CA002_K99L		sklop	1			247.0
CA003_K100L		sklop	1			247.0
CA004_K101L		sklop	1			247.0
CA005_K103L		sklop	1			247.0
CA006_K104L		sklop	1			247.0
CA007_K105L		sklop	1			247.0
CA008_K107L		sklop	1			247.0
CA009_K109L		sklop	1			247.0
CA010_X110AL		sklop	1			1011.0
CA011_X110BL		sklop	1			1034.4
CA012_X110CL		sklop	1			1031.7
CA013_X110DL		sklop	1			750.5
CA015_Y1540D		sklop	1			4362.9
CR001_KROVL		sklop	1			1750.4
CR002_X102AL		sklop	1			865.7
CR003_X102BL		sklop	1			891.6
CR004_X102CL		sklop	1			1035.2
CR005_X102DL		sklop	1			527.3
CR006_X102SB		sklop	1			642.5
CR007_X106AL		sklop	1			863.5
CR008_X106BL		sklop	1			888.7
CR009_X106CL		sklop	1			1031.8
CR010_X106DL		sklop	1			528.1
CR011_X106SB		sklop	1			642.5
CR012_X108AL		sklop	1			955.9
CR013_X108BL		sklop	1			980.2
CR014_X108CL		sklop	1			977.7
CR015_X108DL		sklop	1			527.3
CR016_X108SB		sklop	1			619.3
CR017_Y1540L		sklop	1			4222.7
CR018_Y5390L		sklop	1			3282.0
CR019_Y9240L		sklop	1			3282.0
CR020_Y13090L		sklop	1			2298.6
CR058_X110SB		sklop	1			843.8



	10A12	pločica	3			527.3
	10B12	pločica	3			619.3
	11C12	pločica	9			4222.7
	11C13	pločica	4			3282.0
	11C13AH36	pločica	8		AH36	3282.0
	11C15.5AH36	pločica	8		AH36	2298.6
	11C15	pločica	12			843.8

GRADNJA:	NACRT BROJ:	LIST:	1	TEZINA:	64079.683
722, 723	4-341-010	LISTOVA:	4	TEZISTE X:	FR105+109.0
SKLOP: <b>3410-VT01-KP11</b>				TEZISTE Y: 6464	
DATUM:				TEZISTE Z: 1507	